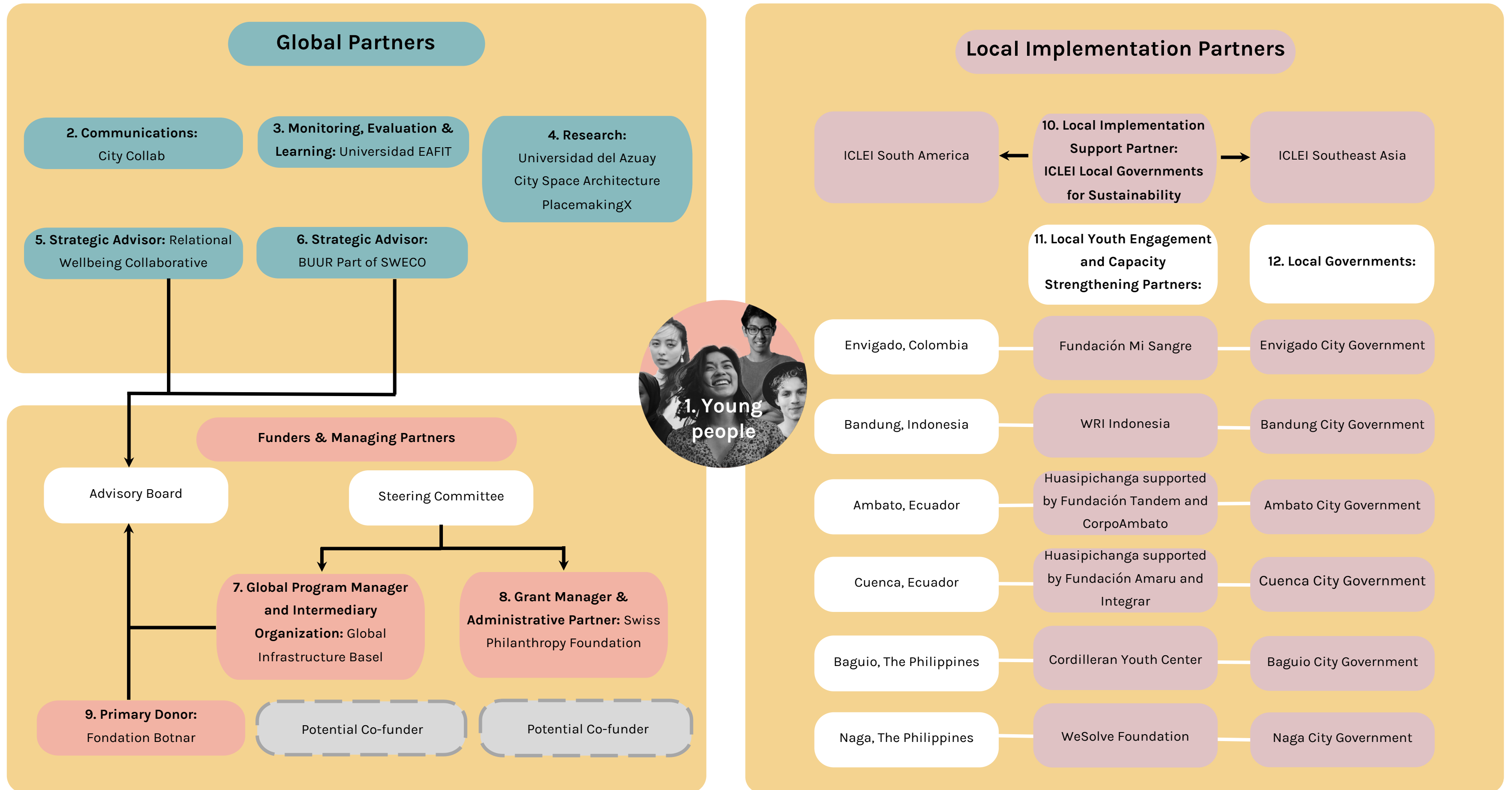


S²Cities stakeholder map



S²Cities is an initiative proudly led by Global Infrastructure Basel Foundation, in partnership with ICLEI, hosted by Swiss Philanthropy Foundation, with the support of Fondation Botnar.



Partner roles and responsibilities

- 1. Young people:** young people are at the heart of the program, engaged as participants and mentors. Their strategic decision making role will be strengthened in Phase II of the program.
- 2. Communications: City Collab.** Responsible for creating communications products, synthesising and translating findings from the focus cities into compelling content for global audiences, and managing social media accounts. City Collab is a consultancy agency based in Ahmedabad, India.
- 3. Monitoring, Evaluation and Learning: Universidad EAFIT.** Responsible for developing the programme's global MEL framework, ensuring partners are informed and aware of MEL activities and processes, and delivering evaluation reports as scheduled in the workplan. Universidad EAFIT is a private university based in Medellín, Colombia committed to the creation, development, and transmission of knowledge in all its forms and expressions.
- 4. Research consortium: PlacemakingX, City Space Architecture, Universidad del Azuay.** Responsible for conducting academic research on key urban safety topics applied to three program cities: young people's use and perception of parks as a public space (Cuenca, Ecuador); formats for conducting innovation engines to maximize youth participation (Envigado, Colombia); and technological tools to better collect data and understand urban safety from youth's perspective (Bandung, Indonesia). The consortium is led by Universidad del Azuay, a private university in Cuenca, Ecuador that is also leading the research unit for Cuenca, in close collaboration with City Space Architecture – a non-profit organisation based in Bologna, Italy which brings together a network of researchers leading the research units for Envigado and Bandung. The consortium is further supported by PlacemakingX, a global network of placemaking thought leaders, public space activists, regional network leaders, and which provides expert advice on understanding urban safety from the lens of the youth and addressing urban safety challenges through the placemaking approach.
- 5. Strategic Advisor: Relational Wellbeing Collaborative.** Responsible for advising partners on a relational and integrative approach to understanding, assessing and advancing wellbeing. Also responsible for informing the program's design and strategic decision making through the Advisory Board. The Relational Wellbeing Collaborative draws on twenty years' research on wellbeing in the Global South to co-design, guide and evaluate sustainable wellbeing strategies.
- 6. Strategic Advisor: BUUR Part of Sweco.** Responsible for advising partners on placemaking approaches. Also responsible for informing the program's design and strategic decision making through the Advisory Board. BUUR Part of Sweco is a leading consultancy firm on urban and territorial development, based in Leuven, Belgium.
- 7. Global Program Manager and Intermediary Organization: Global Infrastructure Basel Foundation.** Responsible for managing the program at a global level, including supporting the program's design, implementation and scaling, as well as serving as the intermediary organization responsible for grant making and recruiting partners. Also a member of the program's Advisory Board and Steering Committee. Global Infrastructure Basel Foundation is a non-profit organisation founded in 2009 and based in Basel, Switzerland committed to promoting sustainable, resilient and regenerative infrastructure, including Nature-based Solutions (NbS) and youth engagement expertise on a global scale.
- 8. Grant Manager and Administrative Partner: Swiss Philanthropy Foundation.** Responsible for supporting the grant making process including conducting due diligence checks, contracting, and administering and managing the philanthropic funds to implement program commitments. Also a member of the program's Steering Committee. Swiss Philanthropy Foundation is a non-profit hosting foundation founded in 2006 and based in Geneva, Switzerland which facilitates philanthropic initiatives and donations in Switzerland as well as cross-border donations in Europe and around the world.
- 9. Primary Donor: Fondation Botnar.** Responsible for providing the program's primary financial support. Also responsible for informing the program's design and strategic decision making through the Advisory Board. Fondation Botnar is a Swiss philanthropic foundation working to improve the health and wellbeing of young people living in cities around the world. Advocating for the inclusion of youth voices and the equitable use of AI and digital technology, the foundation invests in and supports innovative programs and research, and brings together actors from across sectors to create dialogue and partnerships.
- 10. Local Implementation Support Partner: ICLEI Local Governments for Sustainability.** Responsible for supporting the recruitment of new partner cities, intermediating with local governments to secure public sector buy-in for program implementation, and supporting the local Capacity Building and Youth Safety partners in each respective implementation city. ICLEI is a global network of more than 2500 local and regional governments committed to sustainable urban development. Active in 125+ countries, ICLEI influences sustainability policy and drives local action for low emission, nature-based, equitable, resilient and circular development.
- 11. Local Youth Engagement and Capacity Strengthening Partners: Fundación Mi Sangre (Envigado, Colombia), WRI Indonesia (Bandung, Indonesia), Huasipichanga supported by Fundación Tandem and CorpoAmbato (Ambato, Ecuador), Huasipichanga supported by Fundación Amaru and Integrar (Cuenca, Ecuador), Cordilleran Youth Center (Baguio, the Philippines), WeSolve Foundation (Naga, the Philippines).** Lead local implementation. Responsible for applying methodologies contextualized to each respective implementation city to engage young people and carry out the program's 4 components: understanding systems, building capacities, catalysing innovation and scaling systems. Each partner is experienced working in the local context on topics of capacity strengthening and youth engagement.
- 12. Local Governments: Envigado, Colombia; Bandung, Indonesia; Ambato, Ecuador; Cuenca, Ecuador; Baguio, the Philippines; Naga, the Philippines.** Responsible for providing support for the program including designating two focal persons for assisting day-to-day activities and mobilizing other public sector officials; allocating a physical space owned by the city to serve as a venue for the "Youth Hub"; and committing some municipal funds to support the implementation of young people's innovations. The cities are also beneficiaries of the program and receive training and capacity development from the local Capacity Building and Youth Safety partner. These commitments are documented through signed Memorandums of Understanding.